



Phosphoserine Monoclonal Antibody

Cat #: ABM40198

Size: 30µl /100µl /200µl

Product Information

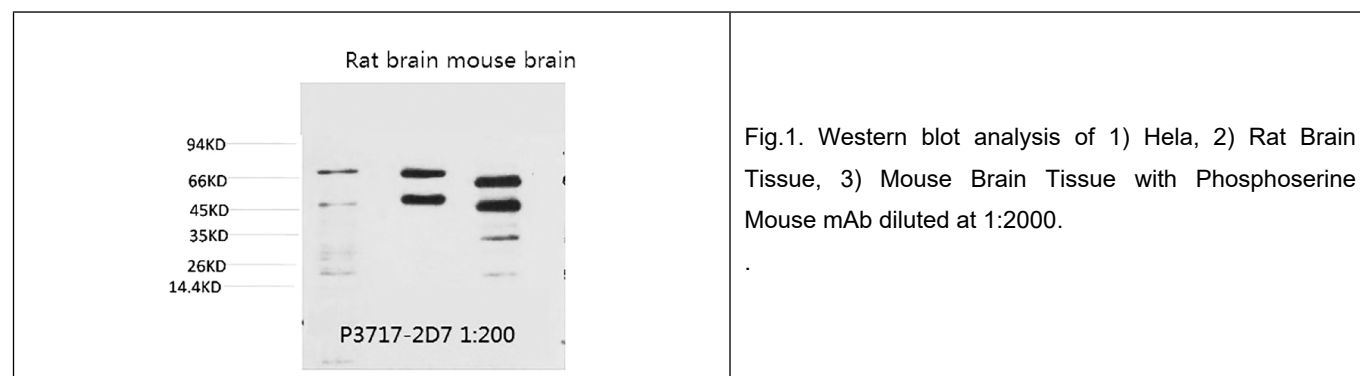
	Product Name: Phosphoserine Monoclonal Antibody		
	Applications: WB, IHC-P		Isotype: Mouse IgG1
	Reactivity: All Species Expected		
REF	Catalog Number: ABM40198	LOT	Lot Number: Refer to product label
	Formulation: Liquid		Concentration: 1 mg/ml
	Storage: Store at -20°C. Avoid repeated freeze / thaw cycles.		Note: Contain sodium azide.

Background: Serine (phosphatidylserine, PS), also known as serine phospholipids, two acyl serine. Phosphate ester compounds in the glycerol phosphate esters, cell membrane group, is one of the important constituents of cell membranes in the brain, especially in the nervous system of the body and also various functions of the brain (especially on the brain's memory and emotional stability) plays important roles, such as it can affects the membrane fluidity and permeability, and can activate the metabolism and synthesis of a variety of enzymes.

Application Notes: Optimal working dilutions should be determined experimentally by the investigator. Suggested starting dilutions are as follows: WB (1:1000-1:2000).

Storage Buffer: PBS, pH 7.4, containing 0.02% Sodium Azide as preservative and 50% Glycerol.

Storage Instructions: Stable for one year at -20°C from date of shipment. For maximum recovery of product, centrifuge the original vial after thawing and prior to removing the cap. Aliquot to avoid repeated freezing and thawing.



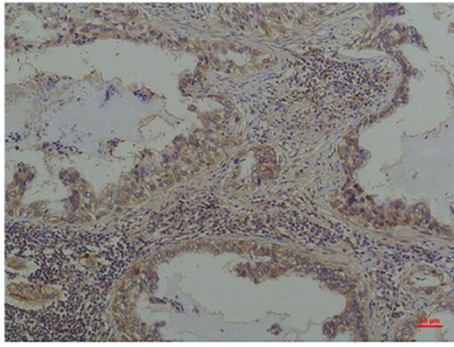


Fig.2. Immunohistochemical analysis of paraffin-embedded Human Lung Carcinoma using Phosphoserine Mouse mAb diluted at 1:200.

Note: The product listed herein is for research use only and is not intended for use in human or clinical diagnosis. Suggested applications of our products are not recommendations to use our products in violation of any patent or as a license. We cannot be responsible for patent infringements or other violations that may occur with the use of this product.